



## **Divina Natura Foundation**

### **Annual Report 2025**

Aragon 15

3831 ET Leusden

Published by: Divina Natura Foundation

Compiled and designed by: Joep Wijsbek

Website: [www.divinanatura.nl](http://www.divinanatura.nl)

Email: [info@divinanatura.nl](mailto:info@divinanatura.nl)

May 2026

## **Contents**

Introduction	4
About the Foundation (mission and organization)	6
Activities in 2025	7
Het Weelde Bos	9
Development of Het Weelde Bos in 2025	11
Community and education	13
Collaboration and Knowledge	14
Communication and Visibility	15
Acknowledgments	17
Outlook	18
Fruitful Dialogues	19
Financial Statements for 2024/2025 with Notes	20

## Introduction

Before you lies the first annual report of the Divina Natura Foundation. From our first tentative steps as a young foundation to the official opening of our first food forest: so much has happened. We'd love to take you along for the ride.

### From idea to reality

The foundation's first few months - the second half of 2024 - were primarily devoted to preparations. We held discussions with the Rudolph Foundation regarding a lease agreement, worked on the design of our first food forest, and built a network with like-minded organizations. At the same time, we took care of the practical matters: grant applications, ANBI status, financial administration (in collaboration with the Sesam Academy), a secretariat, a website, and accounts on Facebook, Instagram, and LinkedIn. A lot of work - but the foundation is in place!

### Het Weelde Bos is born

On **January 1, 2025**, the time had finally come we officially launched **Het Weelde Bos** in De Glind, in the municipality of Barneveld. On a plot of approximately 1.2 hectares of farmland - leased from the Rudolph Foundation since December 19, 2024 - our first food forest slowly began to take shape.

The Rudolph Foundation has committed in a letter of intent to give us space to develop a food forest here **long-term** as an innovative and agricultural development site. A great foundation to build upon!

We celebrated the official opening on **Wednesday, March 19, 2025** - fittingly on National Tree Day. Together with the Rudolph Foundation, we unveiled the information sign on Boshuisweg and planted a special tree: the **onion soup tree**.

### A Year Full of Growth

Over the past year, a great deal has happened at Het Weelde Bos. Many trees, shrubs, and groundcover plants have been planted; a shrub hedge has been established; and thanks to donations from family and friends, we were able to purchase a **gypsy wagon** (for tool storage), a **water pump**, and a **compost toilet**. We also created several landscape features, such as a worm hotel, two nesting boxes for a kestrel and a barn owl, a bee hotel, and three hedgehog houses.

In this annual report, we provide a detailed account of all these developments. But first, let's take a moment to address the question we hear so often: *what exactly is a food forest, and how are we bringing it to life in Het Weelde Bos?* Because we've noticed that many people would like to know more about it!

### **Financially: a positive start**

Financially speaking, 2025 was a good year. Thanks to donations from individuals and grants from institutions and companies, we closed the 2024/2025 fiscal year with a **surplus of € 20,790**, which allowed us to finance the investments we have planned for 2026. A detailed overview can be found in the appendix (financial statements with notes).

### **Thanks to our volunteers**

We could never have done all this without the many volunteers who helped us over the past year. Your dedication means the world to us. **Thank you very much!** We hope we can continue to count on you in the years to come.

*This annual report begins with a brief summary of who we are and what we do. We have included our financial statements as an appendix.*

## About the Foundation (Mission and Organization)

The **Divina Natura Foundation** is an initiative of Cindy Wijsbek and Hans-Wouter Edewaard. The foundation was established on July 1, 2024, and is dedicated to creating and managing food forests and edible woodland gardens - places where nature, food, and people come together.

**Chamber of Commerce number** 94329907 **RSIN** 866736839

We work to **restore biodiversity and soil health** and create an accessible place where people of all ages can enjoy, learn, and connect. With a special focus on children, young people, and intergenerational encounters.

Through **workshops, guided tours, educational activities, and recreation**, we make the wonders of nature tangible and delicious. We collaborate with schools, municipalities, farmers, and organizations to accelerate the transition to sustainable, agroecological agriculture.

We share any abundant harvest fairly: through **picking subscriptions for people living in poverty** and by welcoming schools and educational groups to learn, gather, pick, and taste.

Divina Natura is a **non-profit foundation** - driven by care for the earth, care for people, and fair sharing.

The foundation's board consists of **Cindy Wijsbek** (chair), **Joep Wijsbek** (secretary), and **Hans-Wouter Edewaard**. In May 2025, the board was expanded to include **Joost van der Struijk**, who has taken on the role of treasurer. Board members receive no compensation for their work.

To make our plans a reality, we took an important step on December 19, 2024. On this date, we signed a lease agreement with the Rudolph Foundation for a plot of agricultural land spanning over 1.2 hectares in **De Glind, municipality of Barneveld**.

The Rudolph Foundation intends to make this land available to us on a **long-term** basis - so that we have the time and space to truly turn it into something beautiful. Here, we are developing our first food forest: **Het Weelde Bos**, a living laboratory where sustainable agriculture, nature, and education go hand in hand.

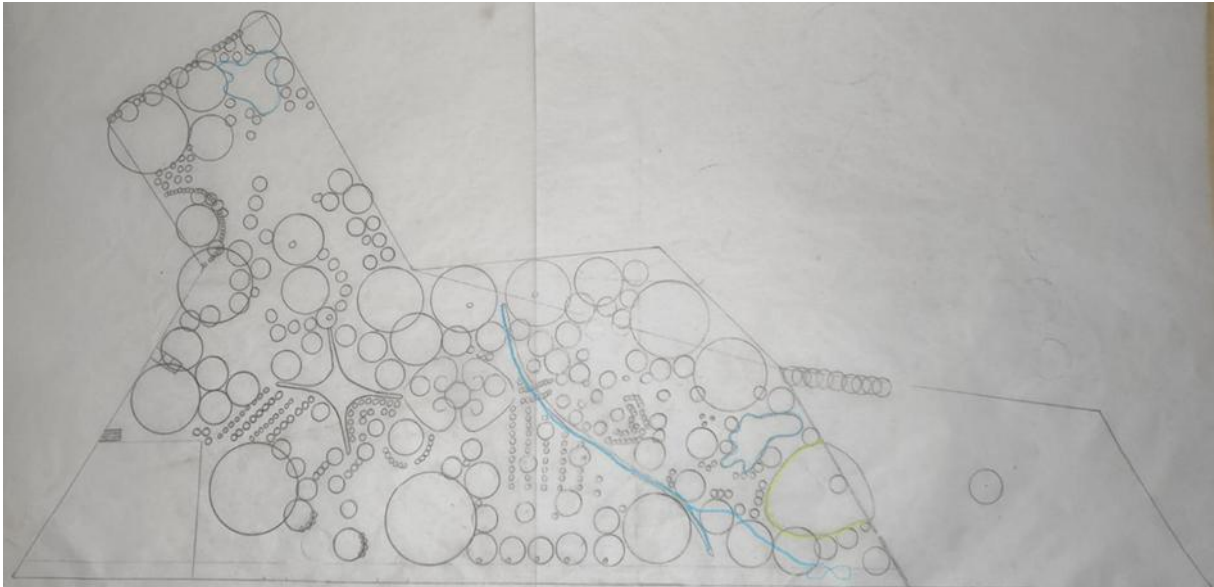
Over the past year and a half, we have received a great deal of support from volunteers, partners, and the local community.

And in collaboration with Wageningen University, we have taken the first steps toward knowledge development.

## Activities in 2025

On January 1, 2025, we launched something special: a **food forest** in the heart of the beautiful De Glind area. A place where nature, food, and people come together. Where trees, plants, and animals have the space to grow - and where you are warmly welcome.

Het Weelde Bos is based on the design below, created by Hans-Wouter.



The design features circles for the mature trees. The hill is shown in green.

### What exactly is a food forest?

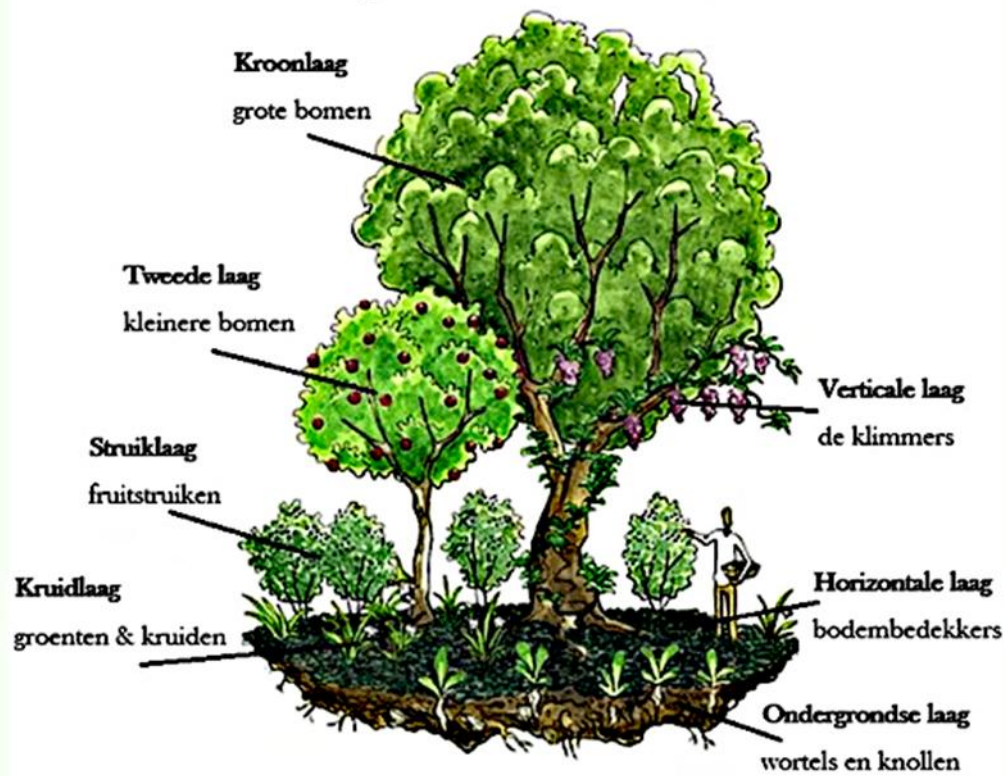
In Het Weelde Bos, we combine nature and agriculture in a way that truly works with nature, not against it. We're planting a varied landscape full of trees, shrubs, and plants that together form a healthy ecosystem. The forest sustains itself as much as possible - good for the soil, good for the water, good for biodiversity. And good for you.

### The seven layers of a food forest

A food forest makes optimal use of vertical space by working with different vegetation layers:

1. **Canopy layer:** Tall trees (7m+) such as walnut trees and sweet chestnuts.
2. **Second layer:** Smaller (fruit) trees such as apple, pear, or currant trees.
3. **Shrub layer:** Berry bushes, elderberry, and hazelnut.
4. **Herb layer:** Perennial herbs and vegetables such as mint, rhubarb, or chives.
5. **Ground cover layer:** Low-growing plants that protect the soil (e.g., wild strawberries).
6. **Root layer:** Root crops such as wild garlic or Jerusalem artichokes.
7. **Vertical climbers:** Grapes, kiwis, or hops that grow through the trees.

## *Lagen van een voedselbos*



The main characteristics of the food forest in brief:

**Self-sufficient:** After planting, the forest requires hardly any fertilizer or pesticides.

**Biodiversity:** The variety of plants attracts birds, insects, and soil life, which keeps the system healthy.

**Climate-resilient:** Food forests retain water and cool the surrounding area in the summer.

**Minimal maintenance:** Nature does most of the work; humans mainly harvest.

## Het Weelde Bos

On Wednesday, March 19, 2025, we celebrated the official launch of Het Weelde Bos.



On this **National Tree Day**, together with the Rudolph Foundation, we unveiled the information sign and planted a special tree: the onion soup tree! Did you know that you can not only eat the leaves, but also make broth from the branches? It tastes like chicken soup - but completely plant-based!

With this initiative, we're taking a step towards a greener, more sustainable future. Thanks to everyone who contributed to this!

Whether you're a curious visitor, a school looking for a living classroom, or someone who just likes to roll up their sleeves - you're very welcome here. We organize:

- Planting and volunteer days.
- Picking & tasting walks.
- Educational programs.
- Informative guided tours.

From young to old, from green thumbs to absolute beginners - there's a place for you.

There's so much more to tell, but it won't all fit in with this annual report. If this has piqued your curiosity, you can also look at the website:



## Join us!

We're still in the early stages, and every helping hand is worth its weight in gold. Would you like to spend a day helping out, planting, or just coming by to take a look? Great! The more people who join in, the more beautiful this forest will become.

Follow us for the latest news, upcoming events, and inspiration:

**Instagram | Facebook | LinkedIn | Bluesky**

## Support Het Weelde Bos

Establishing a food forest takes time, care, and resources. With your support, we can create beautiful gathering spots and amenities for all the volunteers and visitors we hope to welcome.



Together, we'll make Het Weelde Bos a place where people and nature are truly in balance.

[Support us at divinanatura.nl/steun-ons](https://divinanatura.nl/steun-ons)



An [ANBI foundation](#) (Public Benefit Organization) is a foundation that dedicates itself almost entirely (at least 90%) to the public interest. ANBIs enjoy tax benefits, such as exemption from gift and inheritance taxes and tax deductibility of donations for donors.

## Development of Het Weelde Bos in 2025

A great deal has happened in Het Weelde Bos over the past year. Too much to mention it all in this annual report. Here is a brief overview.

### 1. Landscape Development

We have installed nesting boxes for a kestrel and a barn owl, a bee hotel, and a worm hotel.



Together with Rotary Leusden, we planted a shrub hedge.

### 2. Biodiversity

We spotted a roe deer and several badgers and released a few hedgehogs:



We also spotted many birds, including a kestrel. And through our wildlife camera, we saw that there is plenty of activity in Het Weelde Bos at night as well.



### 3. Climate and Soil

Over the past year, we installed a water pump to support the many newly planted trees during their early years, based on the assumption that these trees will face hot summers and prolonged periods of drought. After this initial phase, the water pump system will take a back seat.



And we had a comprehensive soil survey conducted.

### 4. Facilities

We have completed several key facilities: a composting toilet, a gypsy wagon, and an electric water pump.



### 5. Impact

Over the past year, we have planted a total of 538 trees and shrubs. In addition, we planted 100 plants in the herb layer.

In 2025, a total of 86 volunteer contributions and volunteer shifts took place at Het Weelde Bos. Recurring shifts by regular volunteers were not counted multiple times. Students from Wageningen University & Research were each counted once.

## Community and Education

We received a lot of support from volunteers and local partners.



We participated in **NLdoet** on March 14 and 15, 2025.

## Sustainable Tuesday

We were included in the presentation package given to Minister Hermans during Sustainable Tuesday. We were there. The Weelde Forest is specifically mentioned in the attached Trend Report. It was an inspiring gathering.



On Saturday, November 1, we participated in **National Nature Work Day**:



Despite the rain, we got a lot of work done that day: planted trees, removed wild blackberries, pollarded willows, prepared three hedgehog houses for hibernation, rolled the paths, etc. That magical feeling every time: being outdoors, doing something good for nature together, and going home with a smile. Thanks to everyone who helped make Het Weelde Bos a little bit more beautiful!

In addition, there were **community service placements** through Welzijn Barneveld.



## Collaboration and Knowledge

Together with the Rudolph Foundation, the Très Jolie pick-your-own garden, Folda Campground, De Landouw Market Garden, and De Glinstertuin Nursery, we are working on a **Green Lung** in De Glind.

We participated twice (in 2024 and 2025) in the **Matchbeurs Leusden**:

### Divina Natura Bingo



### MATCH WIN-WIN



Through The Science Shop, we entered into a partnership with Wageningen University & Research.



This collaboration has resulted in an insightful advisory report focused on our external communications and collaboration. We have included a summary of this advisory report as an attachment. Our thanks to the authors.

Over the past year, with the help of the Sesam Academy, we have established a clear financial structure that tracks our income, investments, and expenses. This serves as the basis for our annual financial statements, balance sheet, and initial financial plan for 2026 - 2027.

## Memberships

We are currently members of:



## Communication and visibility

We are active on Facebook, Instagram, and LinkedIn, where we regularly post about new activities and special events.

In addition, articles about us have appeared in regional media:



We have created a website: [www.divinanatura.nl](http://www.divinanatura.nl), which features a special section on Het Weelde Bos: [www.divinanatura.nl/het-weelde-bos](http://www.divinanatura.nl/het-weelde-bos).



## Acknowledgments

This project would not have been possible without the support of many people involved. We would like to thank our grant providers, partners, volunteers, and donors for their trust, dedication, and contributions to the development of the Divina Natura Foundation and Het Weelde Bos.

We are particularly grateful for the financial contributions from, among others, the Province of Gelderland, Trees for All (Groen Doen Fund), the Culture Fund, Nature and Environment Gelderland, the Oranje Fund, AFAS, the Green Allies Incentive Fund, and the Yves Rocher Foundation. Many private donors and fundraising campaigns, such as the knitting campaign, have also contributed to this effort.

In addition, we thank our partners and supporting organizations, including Wageningen University & Research, Sesam Academie, the Vallei en Veluwe Water Board, Welzijn Barneveld, SL Gelderland, the Municipality of Barneveld, Matchbeurs Leusden, Life Terra, Dorpsplatform De Glind, and The Social Handshake.

At the local level, we work closely with the Rudolph Foundation, Pluktuin Très Jolie, Camping Folda, Tuinderij De Landouw, and Kwekerij De Glinstertuin, as part of a growing network in De Glind.

We also thank parties that have contributed in practical ways, such as MeerBomenNu, the Zadenbieb Leusden, and the Egelopvang Nijkerkerveen. Zwembad Splash (De Glind). In addition, organizations and initiatives have contributed through volunteers and community service placements, including Rotary Leusden, Zorgboerderij Blommendaal, and students through MaS Barneveld.

A special word of thanks goes out to everyone who contributed in the early stages, including Spek & Van den Beld Notariaat, which supported us during our founding, and VZW Food Forest Institute, where we were able to take a food forest course at a reduced rate.

We also thank the media outlets that have covered our initiative, including Veluwe Totaal, the Barneveldse Krant, and the Leusderkrant. Thanks to these publications, we have been able to reach a wider audience and involve more people in Het Weelde Bos.

Throughout our development, we have learned a great deal from others who have been active in the world of food forests and regenerative agriculture for some time. In particular, we are grateful for the knowledge and inspiration provided by the association Voedsel uit het Bos, including through the Voedselboscast.

Finally, we would like to thank the many volunteers who helped out during planting days, NLdoet, National Nature Workday, and other activities. Without you, this would not have been possible.

## Looking Ahead

For the Divina Natura Foundation, 2025 was primarily a year of laying the groundwork—and we succeeded! In addition to developing the food forest itself, the educational aspect also proved increasingly popular: many people are interested in learning about food forests and what they have to offer.

We will continue this focus in the coming year. Our collaboration with Wageningen University, Maatschappelijk Welzijn Barneveld, and Milieudefensie is taking further shape, and exciting new features are planned for Het Weelde Bos. For example, we will create a “vitamin grove” and a spiral hill—which will immediately become one of the food forest’s highlights. The differences in elevation create various sunny and shady spots, which ensures greater variety and biodiversity. With native plants, the hill will become a home for pollinators and birds: a place that is both ecologically valuable and simply a joy to experience.

Finally, there is the ambition to grow the volunteer group. It would be wonderful to be able to count on a core group of enthusiastic helpers who will join us in making this happen.

## Fruitful Dialogues



### Summary

A wonderful initiative is taking root in the heart of De Glind: Het Weelde Bos, a food forest established by the Divina Natura Foundation. The goal? Sustainable food production, greater biodiversity, and a place where people can experience nature and learn from it.

The ecological opportunities are promising, but for the initiative to truly flourish, collaboration is essential. Various stakeholders - including the Rudolph Foundation as the landowner, neighboring green projects, and the Municipality of Barneveld - each view the food forest in their own way. This sometimes leads to confusion regarding policies, roles, and expectations.

At the request of Wageningen University's Science Shop, a study was conducted to determine how a productive dialogue between all these stakeholders can be established. Discussions, policy studies, and observations reveal that Divina Natura's ambitions align well with the vision of other parties - but that there is still little genuine contact and collaboration. The municipality has significant formal authority but has not yet established a clear policy regarding food forests. And reactions range from enthusiastic to cautiously wait-and-see.

The report makes concrete recommendations: such as open meetings, clear communication, and utilizing shared spaces to build trust. It also advocates for better alignment of the food forest with local values and existing policies.

In short: the foundation is there, and the will seems to be present. With the right dialogue, Het Weelde Bos can grow into a sustainable and widely supported initiative for all of De Glind.

# Financial Statements for the 2024/2025 Fiscal Year with Notes

## General

These are the first financial statements of the Divina Natura Foundation and cover the extended fiscal year from July 1, 2024, through December 31, 2025.

The foundation holds ANBI status. As this is the first fiscal year, these financial statements do not include comparative figures.

Stichting Divina Natura maintains its records on a cash basis. This means that revenues and expenses are recognized at the time of actual receipt or payment, respectively, without accounting for amounts still to be received or outstanding obligations.

The board consists of four members and performs its duties on a volunteer basis.

## Balance Sheet

### Bank and Cash

The bank and cash balances as of December 31, 2025, amount to € 13,716 and € 1,810, respectively.

### Fixed Assets

Investments refer to expenditures on tangible fixed assets exceeding €1,000 per investment. These assets are depreciated on a straight-line basis over a period of 60 months, with a residual value of zero.

The investments in the 2024/2025 fiscal year relate to the purchase of a TROBOLO dry toilet, a water pump system, and a Pipowagen.

	purchase price	purchase date	useful life	depreciation	carrying val. 31-12-2025
TROBOLO dry toilet	€ 2.128,70	21-11-2024	60 months	€ 471,86	€ 1.656,84
Pipowagen	€ 1.000,40	16-1-2025	60 months	€ 191,47	€ 808,93
Water pump system	€ 3.191,00	19-5-2025	60 months	€ 392,87	€ 2.798,13
<b>Total</b>				€ 1.056,20	€ 5.263,90

### Restricted Reserve

Of the funds received in 2024/2025, an amount of € 14,000 has been set aside in the restricted reserve for planned projects and investments in 2026, specifically for the continued development and landscaping of Het Weelde Bos.

## Equity

The positive result for the 2025 fiscal year has been added to the foundation's equity. As of December 31, 2025, equity stands at € 6,790.

The equity is at the board's discretion, within the foundation's statutory objectives.

## Balance Sheet as of December 31, 2025

ACTIVA			PASSIVA		
Materiele vaste activa	€	5.263,90	Eigen vermogen	€	6.790,79
Kas	€	1.810,00	Bestemmingsreserve	€	14.000,00
Bank Triodos	€	13.716,89			
<b>totaal</b>	<b>€</b>	<b>20.790,79</b>	<b>totaal</b>	<b>€</b>	<b>20.790,79</b>

## Statement of Income and Expenses

### Result

A positive result of € 20,790 was achieved for the 2024/2025 fiscal year.

### Notes on Income

Income consists entirely of donations and grants from institutions, companies, and individuals.

The most significant contributions from organizations were received from:

- Trees for All (€ 2,470)
- Vogelbescherming Nederland (€ 2,000)
- Province of Gelderland (€ 9,453)

Donations and grants are recorded in the accounts at the time the awarded amount is actually received by the Divina Natura Foundation.

### Explanation of Expenses

#### Lease

The lease agreement with the landowner, the Rudolph Foundation, runs through December 31, 2030. A 50% reduction in the lease payment has been granted for the years 2025 - 2027. We assume, based on the Rudolph Foundation's letter of intent, that this lease will continue to be tacitly renewed.

### *Development and Planting*

These costs are largely one-time expenses and relate to the initial development of the food forest. The expenditures include:

- purchase of plants and seeds;
- fertilizer and potting soil;
- tools and supplies;
- construction of paths;
- visitor facilities;
- installation of the water pump.

### *Depreciation costs*

For the basis of depreciation, please refer to the notes under “Fixed assets.”

### *Office, administrative, and banking costs*

These costs relate to membership fees and subscriptions, the purchase of professional literature, courses taken, service fees for the e-accounting system, and maintaining a bank account with Triodos Bank.